

General Information

- ❖ Please make appointment in advance.
- ❖ Please bring the referral letter and I.D. Card / Passport or valid Hong Kong Travel Visa for registration 15 minutes before the appointment.
- ❖ Please inform us at 22003155 during office hour if you cannot attend in time.
- ❖ When typhoon signal No. 8 (or above) or the rain storm black warning is hoisted, please contact us to rearrange a new appointment.
- ❖ In addition to health examination scheme, optional diagnostic investigations are available. Please refer to our website.

References:

www.21.ha.org.hk/smartpatient

Effective since: 1 March 2022

PFE-EPI-3-E015



- We provide "Octopus hourly parking services"
- Green Line Minicab: 2, 17M, 25M, 46, 70,
- Red Line Minicab: Mongkok to San Po Kong / Wong Tai Sin / Kowloon City
- Public Buses: 1, 1A, 2A, 6D, 7B, 9, 12A, 13D, 16, 24, 27, 42, 95, 98C, 113, 203E, 296C, N216
- MTR
- * Lok Fu: 5 mins by taxi
- * Mongkok: by red line minibus, get off at Lomond Road
- * Sung Wong Toi: Exit B1, about 5-10 minutes walk
- East Rail Line
- * Mongkok East: about 5 minutes by taxi
- * Kowloon Tong: by green line bus no. 25M
- Rehabus (Dial-a Ride): (852) 2817 8154



St. Teresa's Hospital
聖德肋撒醫院

Trans-Esophageal Echocardiography (TEE)

Examination Information



Trans-Esophageal Echocardiography



Health Screening & Diagnostic Centre

1/F Main Block, St. Teresa's Hospital

Tel:(852) 2200 3155

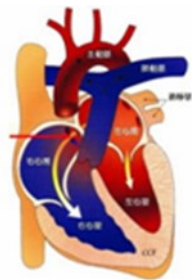
Working Hours:

08:00-16:00 (Monday to Saturday)

Introduction

Transesophageal echocardiography (TEE) is an imaging examination of heart structure and function through the use of ultrasound wave.

It is performed by introducing an ultrasound probe through the mouth into the oesophagus.



To diagnose:

- Congenital heart disease
- Cardiac tumour or emboli
- Infective endocarditis and aortic dissection

Before the Procedure

- ※ Doctor will explain the nature, risk and complications to you and you have to sign a consent form.
- ※ Fasting for 6 hours is required prior to the procedure.
- ※ We will check whether you have any history of swallowing difficulty, radiation therapy and chest or neck surgery and you will be asked if you have allergic history and prior intolerance of sedative medications.
- ※ We will establish a venous access on your hand for intravenous sedation administration.
- ※ You are advised to accompany by relatives (especially for out-patient).

During the Procedure

1. All dentures, if present, must be removed, and you will be connected to a monitoring device
2. The procedure takes around 15-30 mins
3. You will be instructed to lie in left lateral position. Just before the procedure, Xylocaine (local anesthetic) spray will be applied to your pharynx; also a low dose of sedative drug may be given. The doctor will introduce the

probe into your oesophagus slowly with your cooperation. To prevent choking, do not swallow oral secretion during the procedure.

Care and Advice

1. No oral intake for at least one hour after the examination to avoid risk of aspiration.
2. You will only be allowed to discharge after the effect of sedation has gone. Don't drink any alcoholic beverage, drive a car or control any machine within 24 hours.
3. You should come back to the hospital or visit a nearby Accidental and Emergency department if you notice any discomfort after the examination.
4. The result will be explained to you by your doctor.

Risks and Complication

- ※ Major complications include esophageal perforation, significant arrhythmia, congestive heart failure and aspiration. The major complication occurs with a frequency of 0.3% with reported mortality of less than 0.01%.
- ※ Sore throat and slightly blood stained saliva may persist and will recover in 1-2 days.

327 Prince Edward Road
St. Teresa's Hospital

Phone: (852)-22003434

Website: www.sth.org.hk