



**St. Teresa's Hospital**  
Oncology Centre

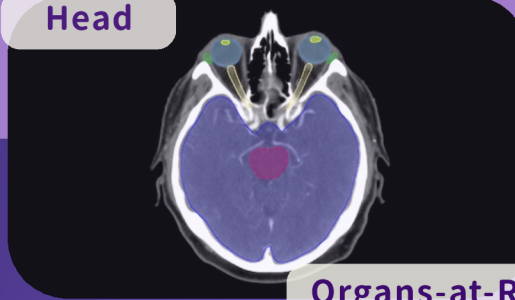
# LIMBUS AI

## ARTIFICIAL INTELLIGENCE CONTOURING

Our center has fully adopted the Limbus AI system developed by a Canadian company, which utilizes artificial intelligence technology to optimize the entire radiation therapy dosimetry process.

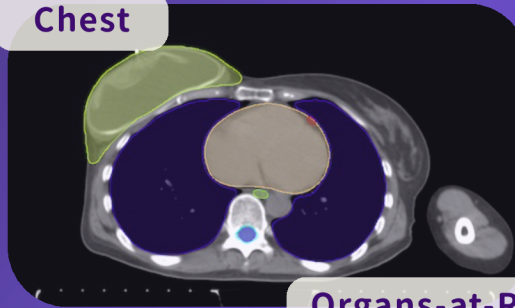
Limbus AI is a clinically validated deep learning artificial intelligence system that assists the radiation dosimetry team and oncologists in automatically delineating organs and potential tumor areas.

Head



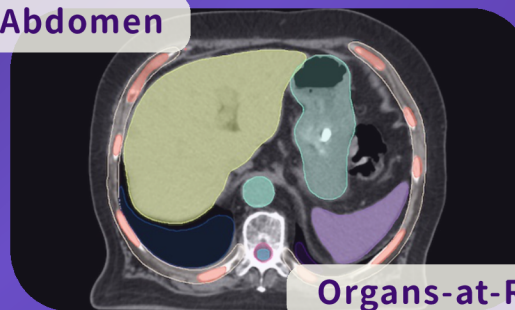
Organs-at-Risk

Chest



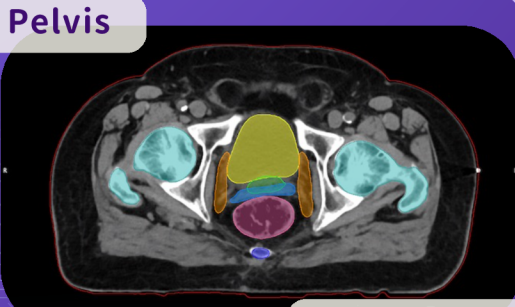
Organs-at-Risk

Abdomen



Organs-at-Risk

Pelvis



Organs-at-Risk

2200 3493

7072 2408 (WhatsApp Only)

B3/F, Main Block,  
327 Prince Edward Road West, Kowloon, HK

## USING LIMBUS AI FAST

After simulation, our center fully utilizes the Limbus AI contouring system, which can automatically outline all human organs within five minutes. This significantly speeds up the entire dosimetry process, reducing the time needed for manual delineation from several hours and allowing patients to receive treatment sooner.

## ACCURATE

Limbus AI can accurately delineate potential areas of disease, and human organs. This system is clinically validated in various countries, significantly reducing human error while maintaining consistency. It can precisely analyze tumors and healthy organs, making it a reliable and safe contouring system.

## SAFE

We are dedicated to safeguarding the privacy of every patient, ensuring that your personal data is not transmitted to any database. Limbus AI operates only on our clinical dosimetry workstation, and no patient information is uploaded to any cloud database, while still maintaining accurate delineation of internal organs.